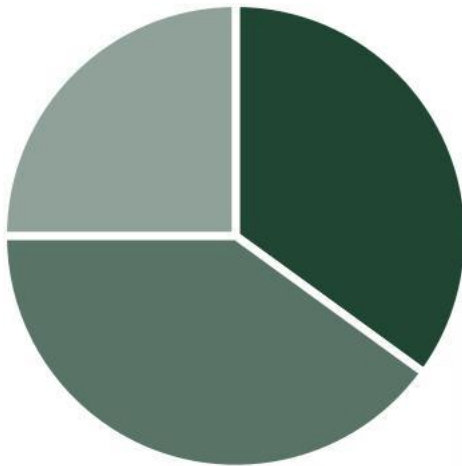


# REINBERG --- & PARTNER

## COMPANY PROFILE

APRIL 2025

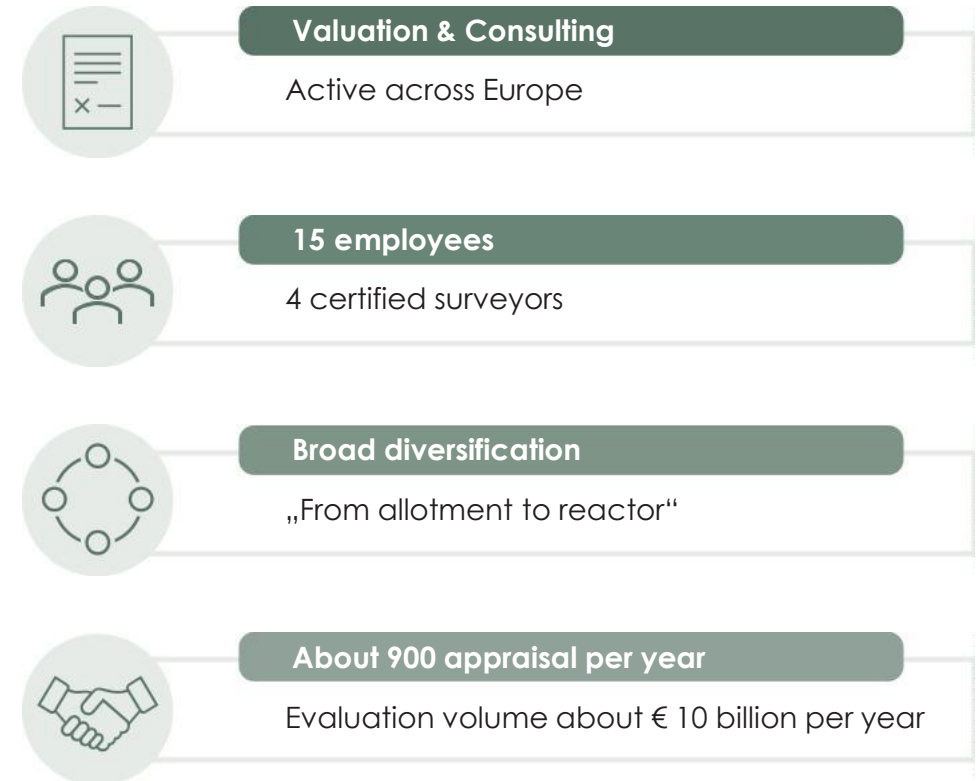
## MANAGEMENT & PARTNERS



- SV, Ing. Isabella Reinberg  
CIS - Immozert MRICS REV
- SV, Ing. Wolfgang M. Fessl  
CIS - Immozert MRICS REV
- SV, DI(FH), PhDr. Michael P. Reinberg PhD  
CRE FRICS REV



## WHO WE ARE



OUR MAIN  
FOCUS

---

Financing by banks

---

Credit institutions

---

Determination of loan values

---

Special forms

---

Portfolio:

Federal properties

Various branches

M & A

---

Fiscal portrayal

(IFRS, ...)

---

etc.

PERFORMED  
EVALUATIONS

---

Apartments  
(as well regulated by WGG)

---

Single family houses

---

Apartment buildings

---

Hospitals and health institutions

---

Police forces

---

Caserns

---

Experimental reactors

---

Commercial real estate  
(IFRS, ...) (e.g., shopping malls, hotels)

---

etc.

ASSOCIATIONS

---

Appraisal Institute  
- *The Appraisal of Real Estate*

---

CRE  
- *The Counselors of Real Estate*

---

IAS / IFRS  
- *International Financial Reporting Standards*

---

IVSC  
- *International Valuation Standards Council*

---

ÖVI  
- *Österreichischer Verband der Immobilienwirtschaft*

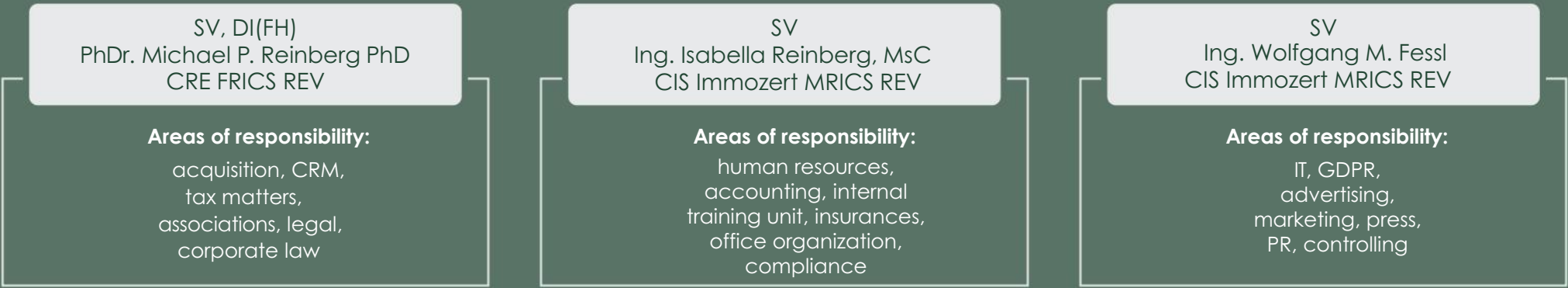
---

RICS  
- *Royal Institution of Chartered Surveyors*

---

TEGoVA  
- *The European Group of Valuer's Associations*

MANAGING PARTNERS



TEAMLEADER EVALUATION



VALUATION/RESEARCH



EXECUTIVE ASSISTANT, OFFICE



FINANCE



EXTERNAL CONSULTING





SV, DI(FH), PhD.  
**Michael P. Reinberg** PhD  
CRE FRICS REV

---

Founder of Reinberg & Partner,  
generally sworn and court-certified  
expert, real estate agent (broker,  
administrator, property developer),  
managing Director

☎ +43 (0)1 8764255  
✉ [m.reinberg@reinberg-partner.com](mailto:m.reinberg@reinberg-partner.com)



SV, Ing. **Isabella Reinberg**, MsC  
CIS Immozert MRICS REV

---

Generally sworn and court-certified  
expert, real estate agent (broker),  
managing director, manager/partner,  
registered mediator

☎ +43 (0)1 8764255 - 13  
✉ [i.reinberg@reinberg-partner.com](mailto:i.reinberg@reinberg-partner.com)



SV, Ing. **Wolfgang M. Fessler**  
CIS Immozert MRICS REV

---

Generally sworn and court-certified  
expert, real estate agent (broker),  
managing director, manager/partner

☎ +43 (0)1 8764255 - 14  
✉ [w.fessler@reinberg-partner.com](mailto:w.fessler@reinberg-partner.com)